

- \* Type "A" Construction Warning Lights
- ⊥ Construction Sign Type A, B or C
- ⊥ Typical Sign Standard (Road Closure Sign Assembly)
- TYPE IIIA or IIIB BARRICADE
- XW20-1 Road Construction — Feet Ahead
- XW2-6-A Worksite Added Penalty Signs

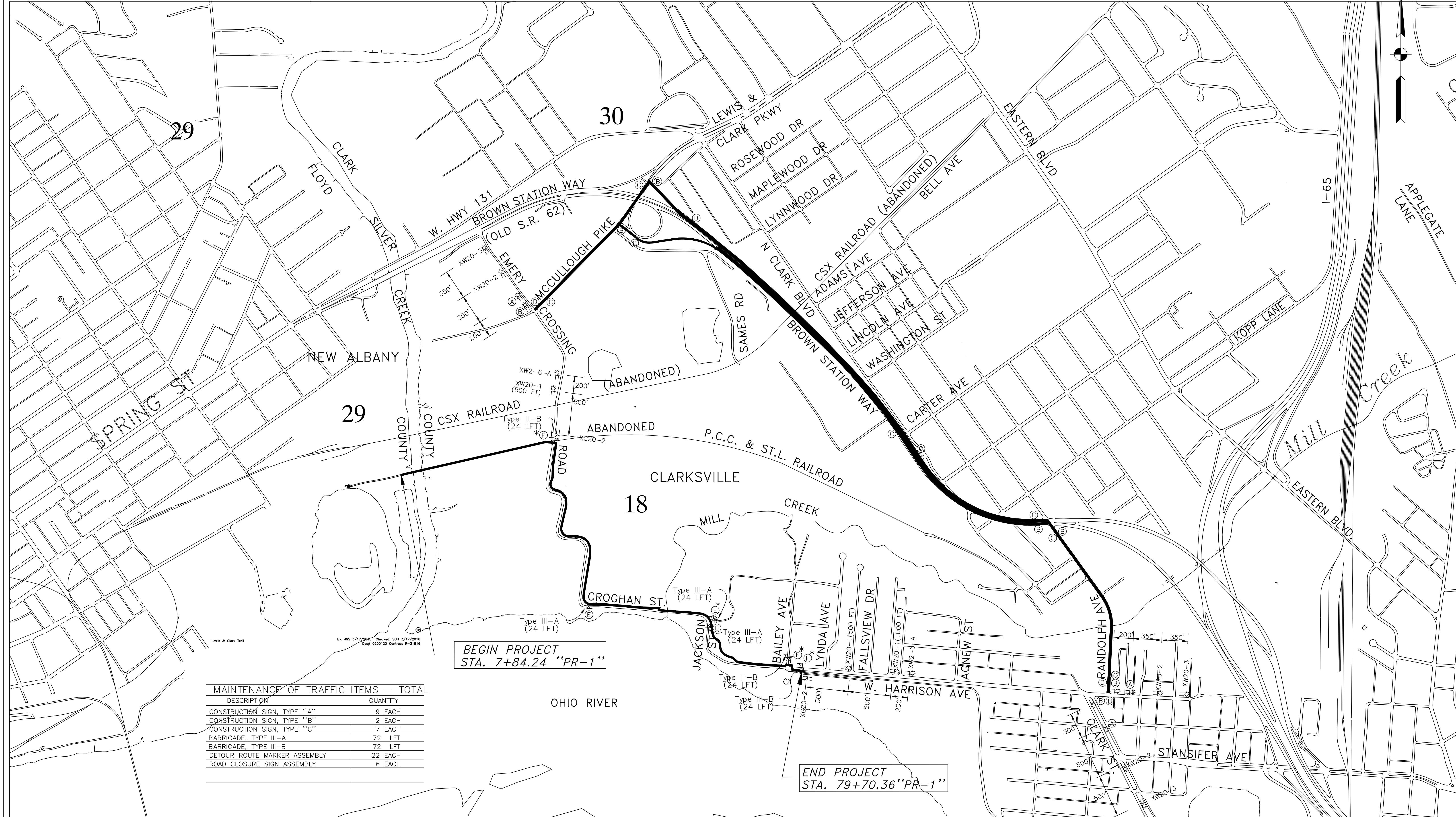
- R11-2 ROAD CLOSED
- R11-4 ROAD CLOSED TO THRU TRAFFIC
- XG20-2 END CONSTRUCTION
- XW20-2 DETOUR AHEAD
- XW20-3 ROAD CLOSED AHEAD

**LEGEND**

- (A) ADVANCE TURN DETOUR ROUTE MARKER ASSEMBLY (LEFT OR RIGHT)
- (B) DIRECTIONAL DETOUR ROUTE MARKER ASSEMBLY
- (C) CONFIRMING DETOUR ROUTE MARKER ASSEMBLY
- (D) END DETOUR ROUTE MARKER ASSEMBLY
- (E) ROAD CLOSURE SIGN ASSEMBLY; TYPICAL SIGN STANDARD, R11-2, AND TYPE "B" CONSTRUCTION WARNING LIGHTS

- (F) ROAD CLOSURE SIGN ASSEMBLY; TYPICAL SIGN STANDARD, R11-4 AND TYPE "B" CONSTRUCTION WARNING LIGHTS

\* PRIOR TO CLOSURE, SIGN STATION "ROAD CLOSED ON" OR AFTER IN PLACE OF (E) TO BE PAID FOR AS CONSTRUCTION SIGN, TYPE "C"



MAINTENANCE OF TRAFFIC ITEMS - TOTAL	
DESCRIPTION	QUANTITY
CONSTRUCTION SIGN, TYPE "A"	9 EACH
CONSTRUCTION SIGN, TYPE "B"	2 EACH
CONSTRUCTION SIGN, TYPE "C"	7 EACH
BARRICADE, TYPE III-A	72 LFT
BARRICADE, TYPE III-B	72 LFT
DETOUR ROUTE MARKER ASSEMBLY	22 EACH
ROAD CLOSURE SIGN ASSEMBLY	6 EACH

BEGIN PROJECT  
STA. 7+84.24 "PR-1"

END PROJECT  
STA. 79+70.36 "PR-1"

S:\EP2002\10081\DRAWINGS\10081.MDT  
LAST EDIT: 11/10/14



**Jacobi, Toombs & Lanz, Inc.**  
 Consulting Engineers & Land Surveyors  
 1829 East Spring Street - New Albany, Indiana 47150  
 812-945-9585 - WWW.JTLENG.COM



DESIGNED: JGS	DRAWN: SGH
CHECKED: TLS	CHECKED: TLS

RECOMMENDED FOR APPROVAL: *Thomas L. Schellberg* 12/28/15  
 DESIGN ENGINEER DATE

**INDIANA DEPARTMENT OF TRANSPORTATION**

**MAINTENANCE OF TRAFFIC DETAILS**

HORIZONTAL SCALE 1"=500'	BRIDGE FILE N/A
VERTICAL SCALE N/A	DESIGNATION 0200120
SURVEY BOOK N/A	SHEETS 11 of 87
CONTRACT R-31816	PROJECT 0200120